



COMMUNITY DEVELOPMENT DEPARTMENT

200 NORTH ALSTON STREET

Foley, Alabama 36535

www.cityoffoley.org

(251) 952-4011

FAX (251) 971 -3442

May 15, 2018

Mayor and City Council
City of Foley
407 East Laurel Avenue
Foley, Alabama 36535

RE: PreZoning Recommendation

Dear Mayor Koniar and City Council Members:

The City of Foley Planning Commission held a regular meeting on April 18, 2018 and recommended pin # 99551 be prezoned as M1 (Light Industrial District).

Please let me know if you have any questions or concerns.

Respectfully,

Melissa Ringler
Planning & Zoning Coordinator
mringler@cityoffoley.org

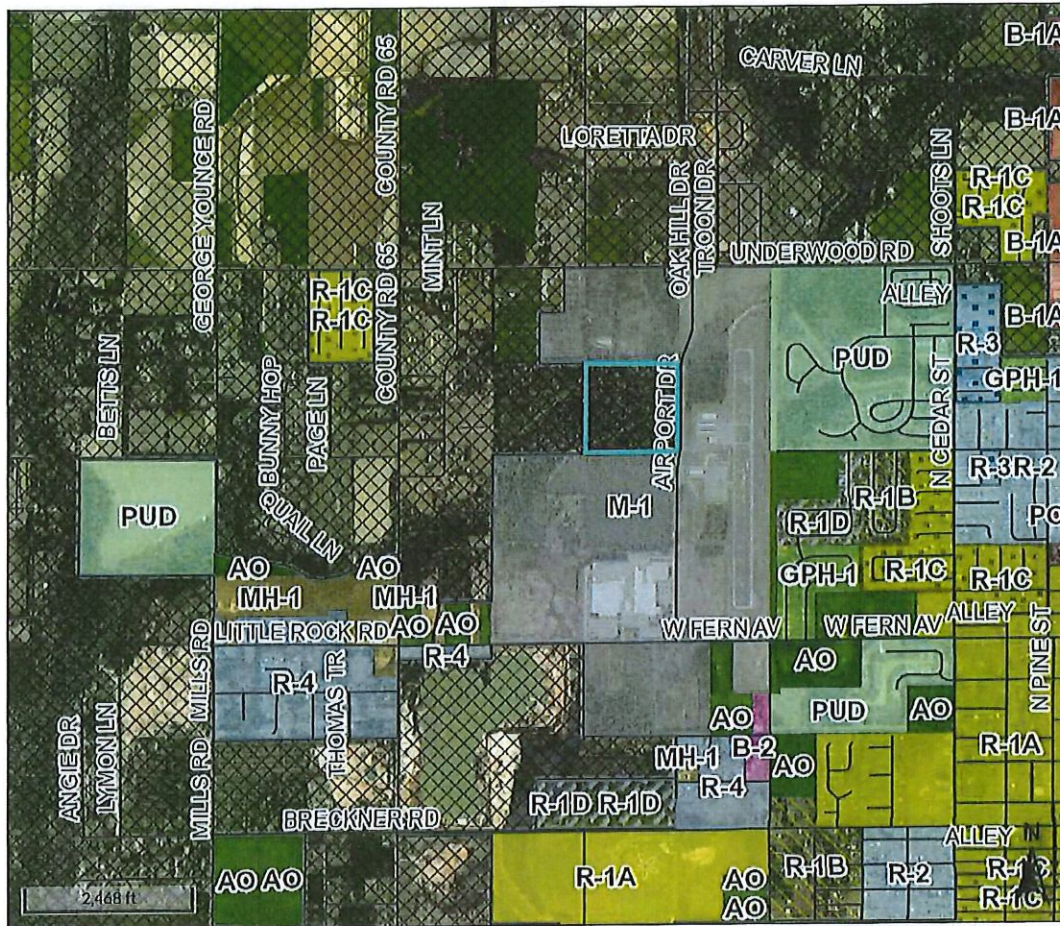
MAYOR: John E. Koniar

CITY ADMINISTRATOR: Michael L. Thompson

CITY CLERK: Vickey Southern

COUNCIL MEMBERS: J. Wayne Trawick; Vera Quaites; Ralph G. Hellmich; Cecil R. Blackwell; Charles Ebert III

05-54-04-18-0-000-011.001



Overview



Legend

- Centerlines
- Foley City Limits
- ▨ County Mask
- Parcels
- Zoning**
- TH-1
- R-4
- R-3
- R-2
- R-1R
- R-1D
- R-1C
- R-1B
- R-1A
- PUD
- PO
- PID
- PENDING
- PDD
- MH-1
- M-1
- GPH-1
- B-3
- B-2
- B-1A
- B-1
- AO

PIN - 99551
 Par Num - 011.001
 Acreage - 38.129
 Subdivision -
 Lot -
 Street Name -
 Street Number - 0
 Improvement -

Name - FLOWERWOOD NURSERY INC
 Address1 - P O BOX 665
 Address2 -
 Address3 -
 City - LOXLEY
 State - AL
 Zip - 36551

The information contained in the digital data distributed by the Baldwin County Commission is derived from a variety of public and private sources considered to be dependable, but the accuracy, completeness, currency, thereof are not guaranteed. The Baldwin County Commission makes no warranties, expressed or implied, as to the accuracy, completeness, currency, reliability, or suitability for any particular purpose of information or data contained in or generated from the county geographic database. Additionally, the Baldwin County Commission or any agent, servant, or employee thereof assume no liability associated with the use of the data and assume no responsibility to maintain it in any matter or form.

parcel #
 05-54-04-18-D-000-011.001