



# City of Foley, AL

407 E. Laurel Avenue  
Foley, AL 36535

## Signature Copy

Resolution: 19-1361-RES

File Number: 19-0613

Enactment Number: 19-1361-RES

### A RESOLUTION FORMALLY ACCEPTING THE MILFIN ROAD ACCESS MANAGEMENT PLAN

WHEREAS, Resolution 17-1076 funded the development of an Access Management Plan for Milfin Road, and

WHEREAS, the draft plan as has been used informally to guide development along Miflin Road, and

WHEREAS, the Roadway System Report 2019 Update includes three individual phases of the Milfin Road (CR 20) AMP.

NOW THEREFORE BE IT RESOLVED that the City Council of the City of Foley, Alabama, as follows:

SECTION 1: Formally accepts the Miflin Road Access Management Plan as presented and direct Staff to incorporate three project Phases into the long range Capital plan for funding and implementation.

SECTION 2: This Resolution shall become effective immediately upon its adoption as required by law.

PASSED, APPROVED AND ADOPTED this 18th day of November 2019.



President's Signature

Date

11-18-19

Attest by City Clerk

Date

11-18-19

Mayor's Signature

Date

11/20/19



# Miflin Road (CR-20) Access Management Plan (Sheet 1 of 4)



**SKIPPER**  
CONSULTING INC

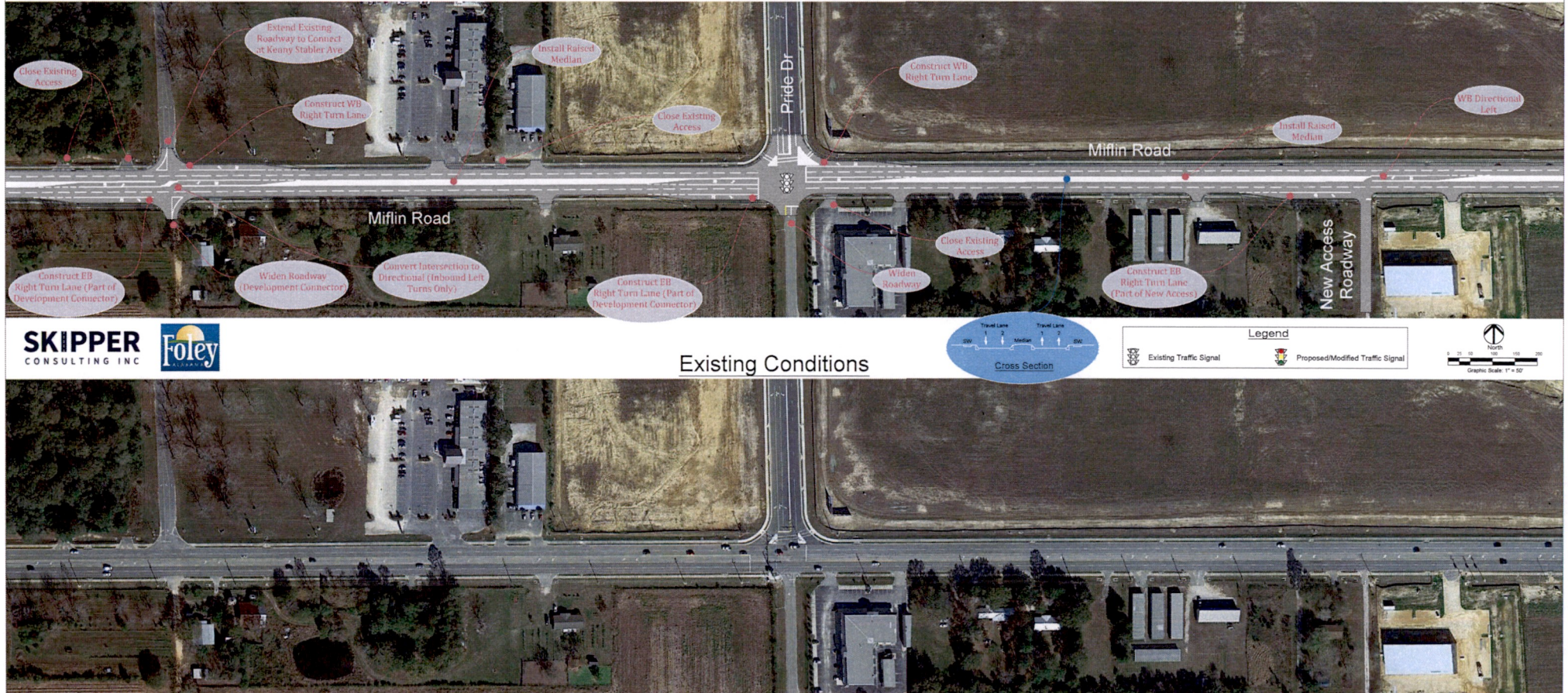


Existing Conditions



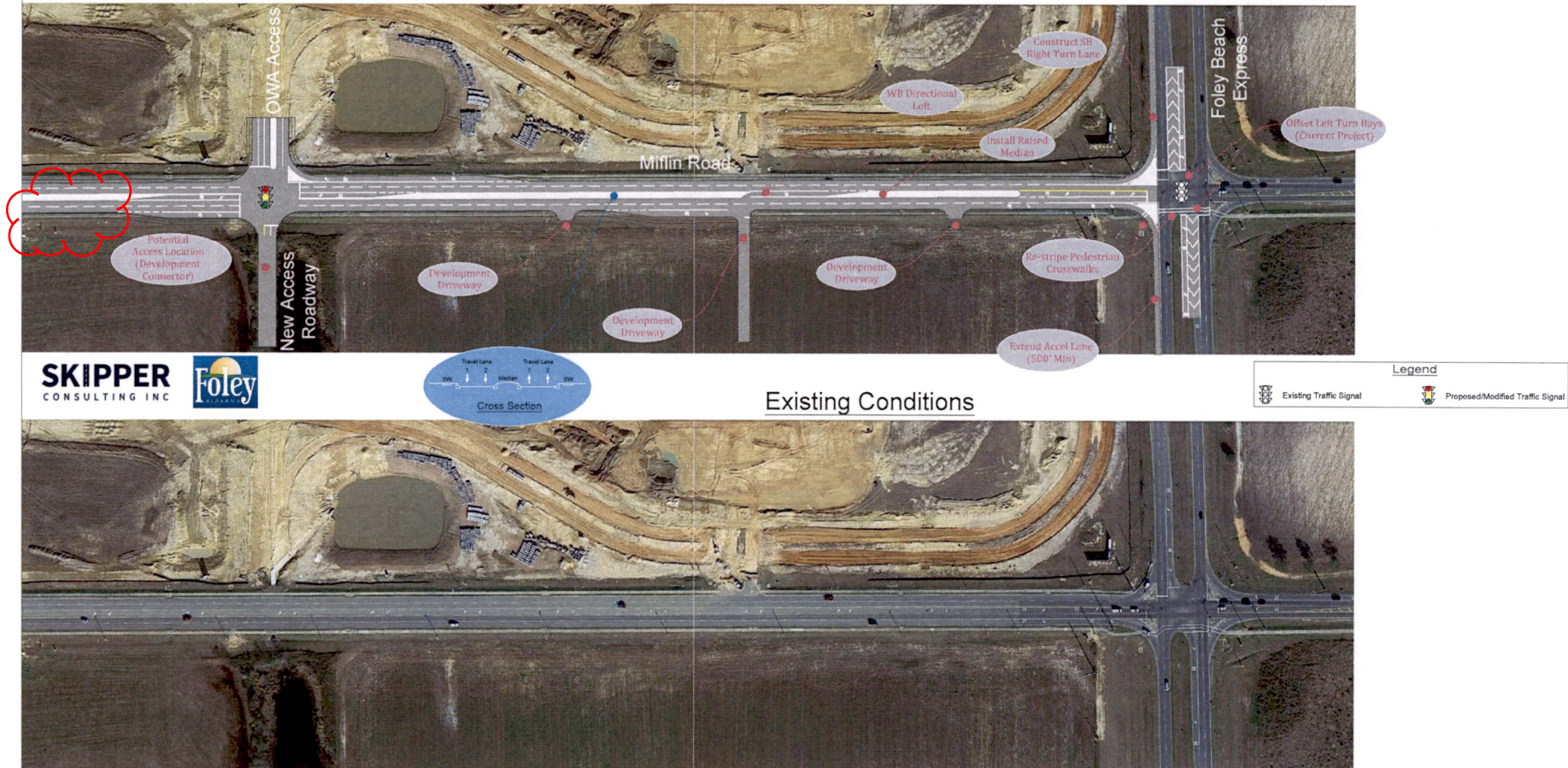


## Miflin Road (CR-20) Access Management Plan (Sheet 2 of 4)





## Miflin Road (CR-20) Access Management Plan (Sheet 3 of 4)





# Miflin Road (CR-20) Access Management Plan (Sheet 4 of 4)

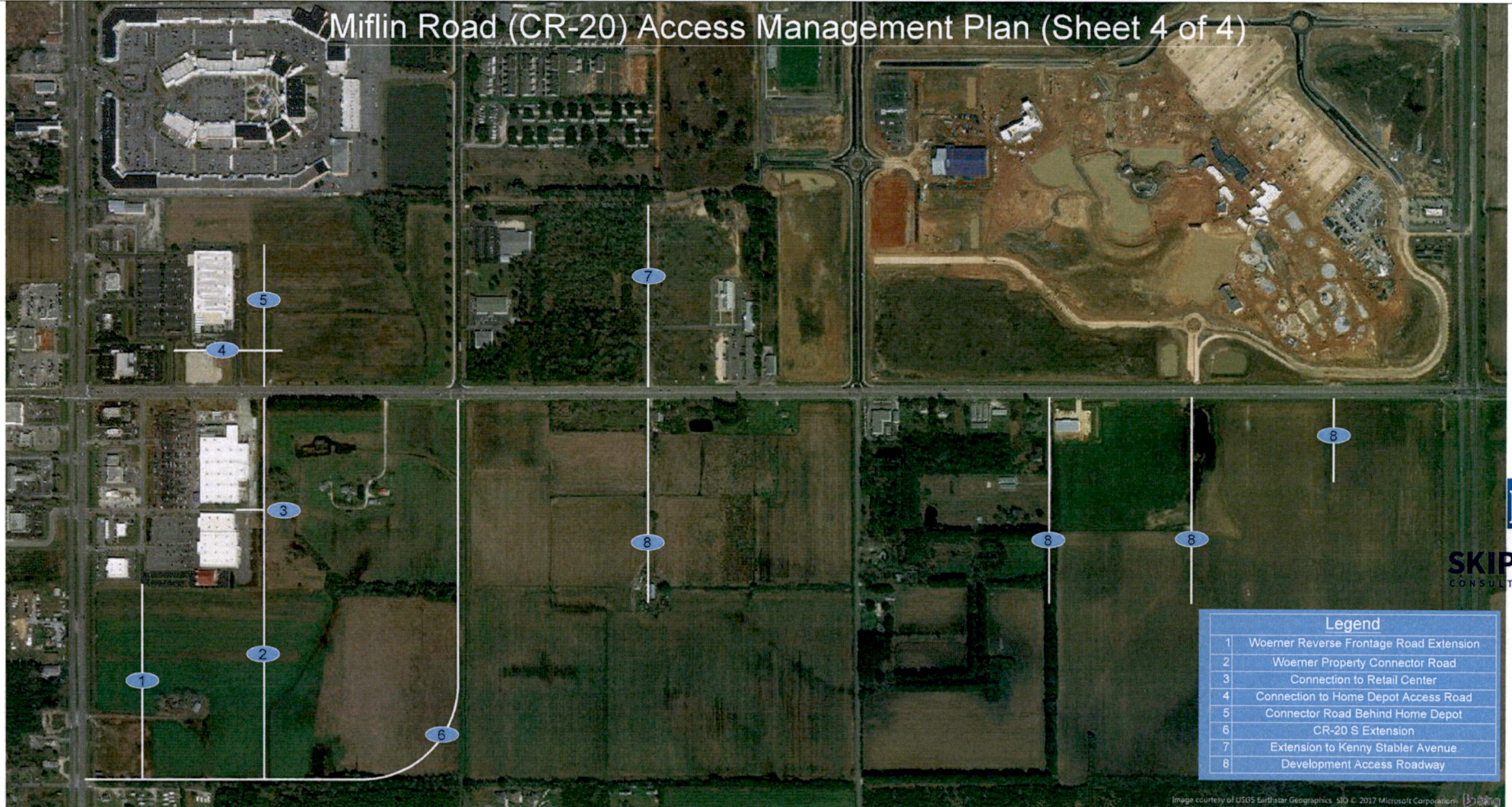


Image courtesy of USGS Earthstar Geographics, 510 C. 2017 Microsoft Corporation.



**SKIPPER**  
CONSULTING INC







## City of Foley, AL

407 E. Laurel Avenue  
Foley, AL 36535

### Signature Copy

Resolution: 17-1076-RES

File Number: 17-0171

Enactment Number: 17-1076-RES

#### CR 20 Access Management

WHEREAS, CR 20 between AL 59 and the Foley Beach Express has strong potential for development in the near term, and

WHEREAS, an overall access management plan is required to guide the safe and orderly development of this corridor.

NOW THEREFORE BE IT RESOLVED that the City Council of the City of Foley, Alabama, as follows:

SECTION 1: Approves allocating \$27,650.00 to develop a Miflin Road (CR 20) Access Management Plan for Account No. 01-624-3020.

SECTION 2: Approves retaining Skipper Consulting to develop a Miflin Road (CR 20) Access Management Plan for a lump sum fee of \$27,650.00.

SECTION 3: This Resolution shall become effective immediately upon its adoption as required by law.

PASSED, APPROVED AND ADOPTED this 20th day of March, 2017.



President's Signature

Date

3-22-17

Attest by City Clerk

Date

3-22-17



Mayor's Signature

A handwritten signature in blue ink, consisting of a large, stylized 'P' followed by a horizontal line and a small flourish.

Date

3/24/17