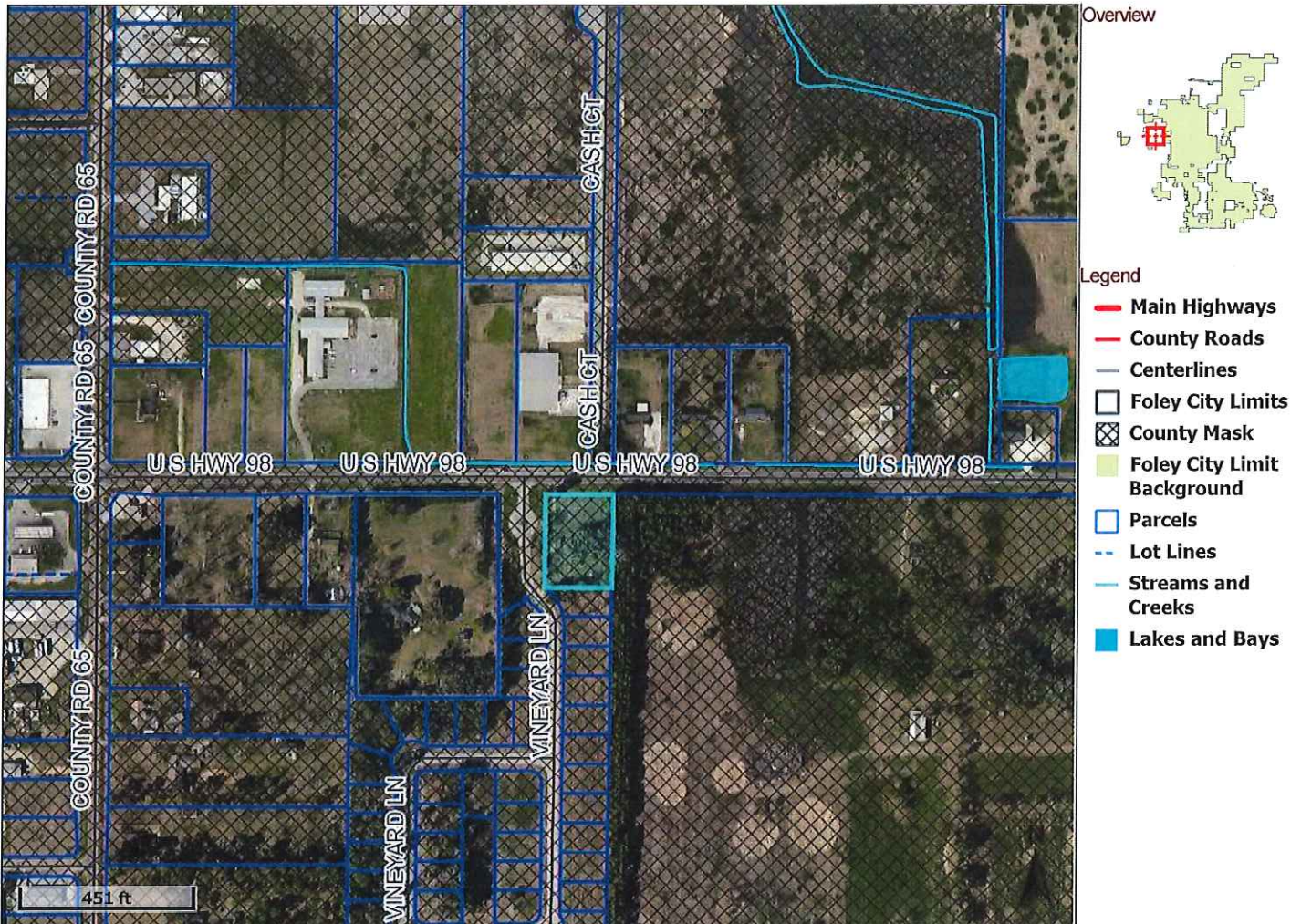


# Proposed Annexation

Dovie M Stephens

Created By: VSouthern  
Date Created: 6/25/2015



**PIN** - 42474  
**Par Num** - 016.000  
**Acreage** - 0.968  
**Subdivision** -  
**Lot** -  
**Street Name** - US HWY 98  
**Street Number** - 18228  
**Improvement** - RES

**Name** - STEPHENS, DOVIE M ETAL STEPHENS, HARRY L  
**Address1** - 1435 ORILLA LANE  
**Address2** -  
**Address3** -  
**City** - BULLHEAD CITY  
**State** - AZ  
**Zip** - 86442

Last Data Upload: 6/24/2015 11:00:16 PM

The information contained in the digital data distributed by the Baldwin County Commission is derived from a variety of public and private sources considered to be dependable, but the accuracy, completeness, currency, thereof are not guaranteed. The Baldwin County Commission makes no warranties, expressed or implied, as to the accuracy, completeness, currency, reliability, or suitability for any particular purpose of information or data contained in or generated from the county geographic database. Additionally, the Baldwin County Commission or any agent, servant, or employee thereof assume no liability associated with the use of the data and assume no responsibility to maintain it in any matter or form.

 developed by  
The Schneider Corporation  
[www.schneidercorp.com](http://www.schneidercorp.com)