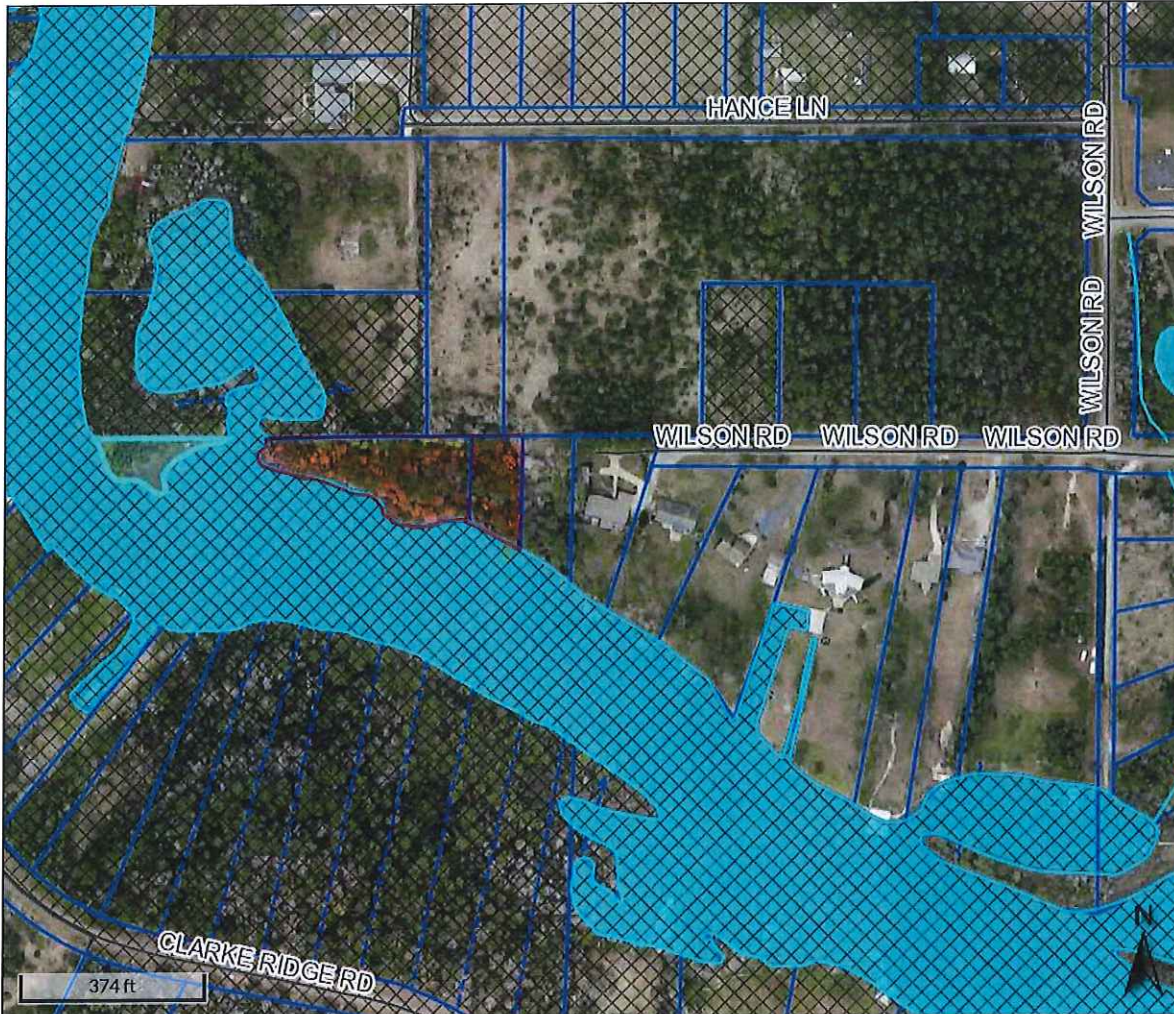


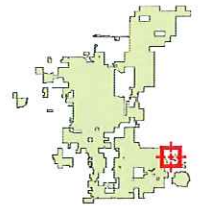
## CITY OF FOLEY

Property that is land locked







Created by: VSOUTHERN



### Overview



### Legend

-  Main Highways
-  County Roads
-  Centerlines
-  Foley City Limits
-  County Mask
-  Foley City Limit Background
-  Parcels
-  Lot Lines
-  Streams and Creel
-  Lakes and Bays

PIN - 64401

Par Num - 057.000

Acreage - 0.313

Subdivision -

Lot -

Street Name -

Street Number - 0

Improvement -

Name - MCCRORY, TIMOTHY P ETAL HOLIDAY, TRACY

Address1 - 5666 ALABAMA ST

Address2 -

Address3 -

City - ORANGE BEACH

State - AL

Zip - 36561

The information contained in the digital data distributed by the Baldwin County Commission is derived from a variety of public and private sources considered to be dependable, but the accuracy, completeness, currency, thereof are not guaranteed. The Baldwin County Commission makes no warranties, expressed or implied, as to the accuracy, completeness, currency, reliability, or suitability for any particular purpose of information or data contained in or generated from the county geographic database. Additionally, the Baldwin County Commission or any agent, servant, or employee thereof assume no liability associated with the use of the data and assume no responsibility to maintain it in any matter or form.

Date created: 5/12/2016



Developed by  
The Schneider Corporation