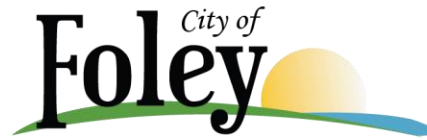


120 West Verbena Avenue  
Foley, Alabama 36535  
(251) 943-1266  
Fax (251) 943-7432  
www.cityoffoley.org

## August 2014

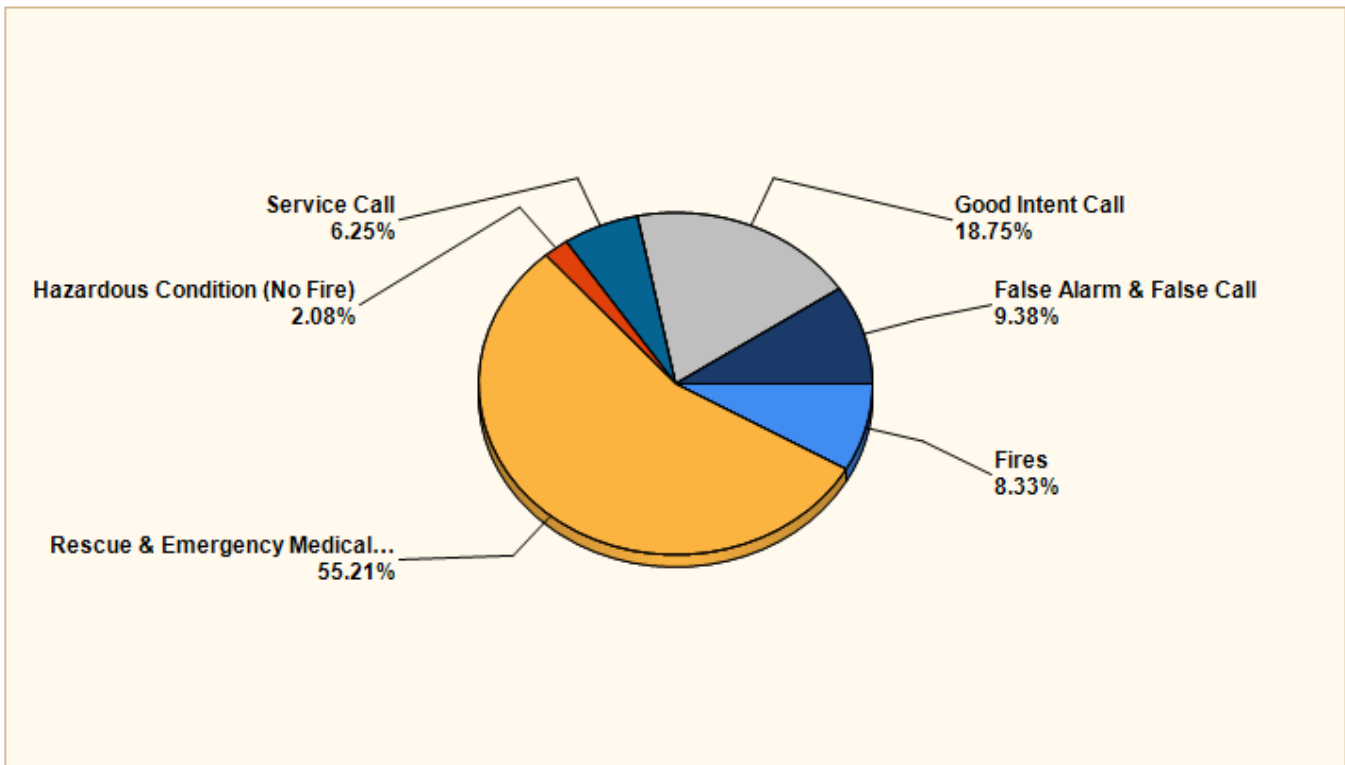
| Detailed Breakdown by Incident Type   |  |             |            |
|---------------------------------------|--|-------------|------------|
| CATEGORY                              | INCIDENT TYPE  | # INCIDENTS | % of TOTAL |
| Fires                                 | 111 - Building fire                                      | 3           | 3.13%      |
|                                       | 130 - Mobile property (vehicle) fire, other              | 1           | 1.04%      |
|                                       | 131 - Passenger vehicle fire                             | 1           | 1.04%      |
|                                       | 142 - Brush or brush-and-grass mixture fire              | 1           | 1.04%      |
|                                       | 143 - Grass fire   | 1           | 1.04%      |
|                                       | 151 - Outside rubbish, trash or waste fire               | 1           | 1.04%      |
| Rescue and Emergency Medical Services | 311 - Medical assist, assist EMS crew                    | 17          | 17.71%     |
|                                       | 322 - Motor vehicle accident with injuries               | 14          | 14.58%     |
|                                       | 323 - Motor vehicle/pedestrian accident (MV Ped)         | 1           | 1.04%      |
|                                       | 324 - Motor vehicle accident with no injuries.           | 21          | 21.88%     |
| Hazardous Condition (No Fire)         | 444 - Power line down                                    | 1           | 1.04%      |
|                                       | 445 - Arcing, shorted electrical equipment               | 1           | 1.04%      |
| Service Call                          | 510 - Person in distress, other                          | 1           | 1.04%      |
|                                       | 551 - Assist police or other governmental agency         | 1           | 1.04%      |
|                                       | 561 - Unauthorized burning                               | 4           | 4.17%      |
| Good Intent Call                      | 611 - Dispatched & cancelled en route                    | 13          | 13.54%     |
|                                       | 622 - No incident found on arrival at dispatch address   | 3           | 3.13%      |
|                                       | 651 - Smoke scare, odor of smoke                         | 2           | 2.08%      |
| False Alarm and False Call            | 710 - Malicious, mischievous false call, other           | 1           | 1.04%      |
|                                       | 711 - Municipal alarm system, malicious false alarm      | 1           | 1.04%      |
|                                       | 730 - System malfunction, other                          | 1           | 1.04%      |
|                                       | 733 - Smoke detector activation due to malfunction       | 2           | 2.08%      |
|                                       | 741 - Sprinkler activation, no fire - unintentional      | 1           | 1.04%      |
|                                       | 743 - Smoke detector activation, no fire - unintentional | 3           | 3.13%      |
| TOTAL INCIDENTS:                      |  | 96          | 100.00%    |



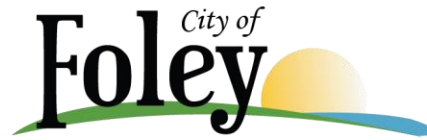
120 West Verbena Avenue  
Foley, Alabama 36535  
(251) 943-1266  
Fax (251) 943-7432  
[www.cityoffoley.org](http://www.cityoffoley.org)

### Breakdown by Major Incident Types for Date Range

Start Date: 08/01/2014 | End Date: 08/31/2014

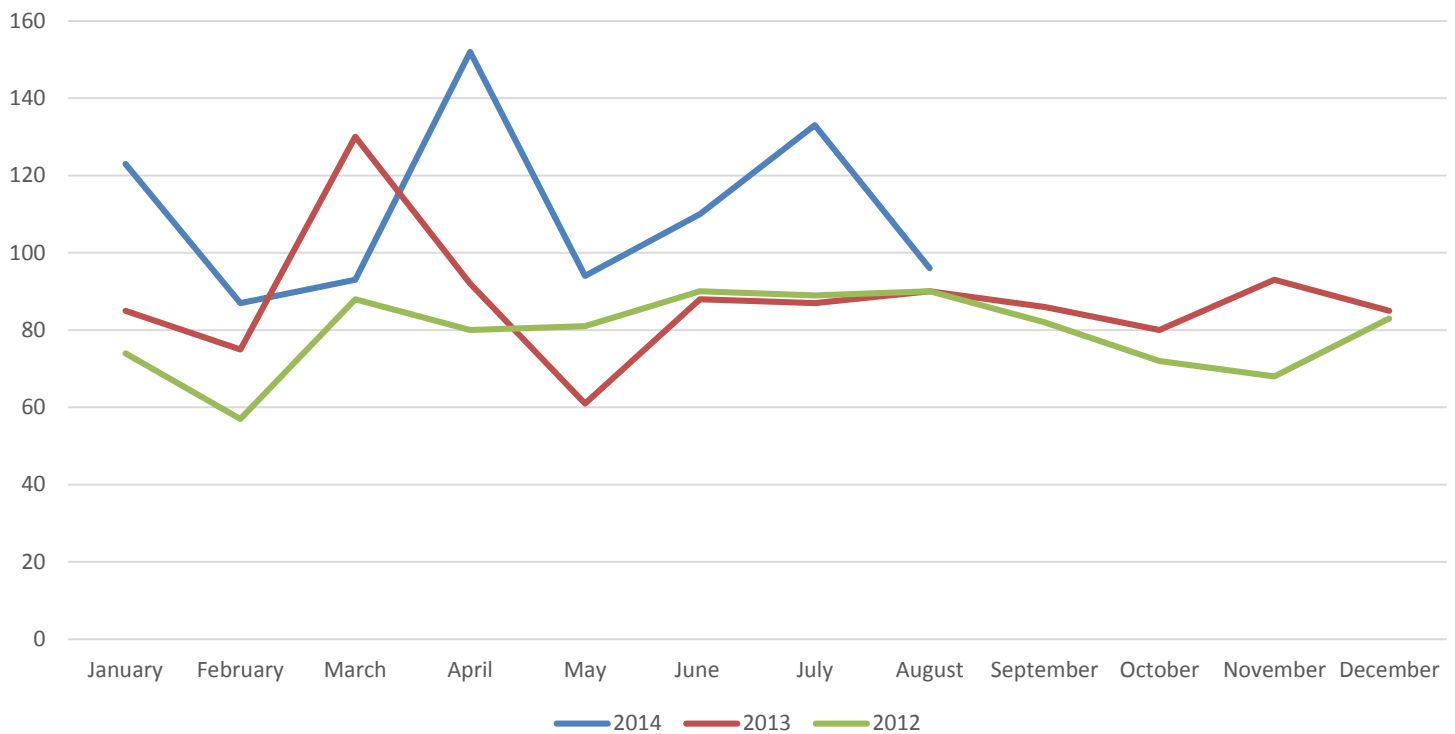


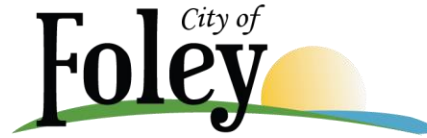
| MAJOR INCIDENT TYPE                | # INCIDENTS | % of TOTAL     |
|------------------------------------|-------------|----------------|
| Fires                              | 8           | 8.33%          |
| Rescue & Emergency Medical Service | 53          | 55.21%         |
| Hazardous Condition (No Fire)      | 2           | 2.08%          |
| Service Call                       | 6           | 6.25%          |
| Good Intent Call                   | 18          | 18.75%         |
| False Alarm & False Call           | 9           | 9.38%          |
| <b>TOTAL</b>                       | <b>96</b>   | <b>100.00%</b> |



120 West Verbena Avenue  
Foley, Alabama 36535  
(251) 943-1266  
Fax (251) 943-7432  
[www.cityoffoley.org](http://www.cityoffoley.org)

### Incident Trend





120 West Verbena Avenue  
Foley, Alabama 36535  
(251) 943-1266  
Fax (251) 943-7432  
[www.cityoffoley.org](http://www.cityoffoley.org)

## Public Education / Public Relations

| DATE       | EVENT TYPE              | EVENT                | LOCATION                | HOURS | NARRATIVE            |
|------------|-------------------------|----------------------|-------------------------|-------|----------------------|
| 08/02/2014 | Heartsaver CPR          | Heartsaver CPR       | Elberta Middle School   | 2     | 8 Adults             |
| 08/04/2014 | Heartsaver CPR          | Heartsaver CPR       | Station 1               | 2     | 14 Adults            |
| 08/05/2014 | Heartsaver CPR          | Heartsaver CPR       | Station 1               | 2     | 10 Adults            |
| 08/06/2014 | Station Tour            | Station Tour         | Station 1               | 0.45  | 1 Adult & 1 Child    |
| 08/08/2014 | Safety Talk             | Safety talk          |                         | 1     | 5 Adults & 4 Kids    |
| 08/14/2014 | Heartsaver CPR          | Heartsaver CPR       | Station 1               | 2     | 6 Adults             |
| 08/14/2014 | Heartsaver First Aid    | Heartsaver First Aid | Station 1               | 2     | 6 Adults             |
| 08/14/2014 | Heartsaver CPR          | Heartsaver CPR       | Foley Elementary School | 2     | 17 Adults            |
| 08/15/2014 | Heartsaver CPR          | Heartsaver CPR       | Station 1               | 2     | 6 Adults             |
| 08/15/2014 | Heartsaver First Aid    | Heartsaver First Aid | Station 1               | 2     | 6 Adults             |
| 08/20/2014 | Heartsaver CPR          | Heartsaver CPR       | Station 1               | 2     | 17 Adults            |
| 08/21/2014 | Heartsaver First Aid    | Heartsaver First Aid | Station 1               | 2     | 9 Adults             |
| 08/25/2014 | Healthcare Provider CPR | Healthcare Provider  | Station 1               | 2     | 6 Adults             |
| 08/16/2014 | Public Safety awareness | Tanger Kidstyle      | Tanger Outlets          | 4     | 100+ Adults/Children |

**Total Contacts – 216+**



120 West Verbena Avenue  
Foley, Alabama 36535  
(251) 943-1266  
Fax (251) 943-7432  
www.cityoffoley.org

## Inspections

|                                       | JAN        | FEB        | MAR        | APR        | MAY        | JUN        | JUL        | AUG        | SEP | OCT | NOV | DEC | 2014<br>Totals |
|---------------------------------------|------------|------------|------------|------------|------------|------------|------------|------------|-----|-----|-----|-----|----------------|
| <b>Plan Review</b>                    |            |            |            |            |            |            |            |            |     |     |     |     |                |
| Commercial                            | 12         | 28         | 46         | 49         | 45         | 52         | 49         | 42         |     |     |     |     | <b>323</b>     |
| Multi-Family                          | 0          | 1          | 2          | 1          | 1          | 1          | 0          | 13         |     |     |     |     | <b>19</b>      |
| <b>Public Contacts/Meetings</b>       | 215        | 412        | 435        | 504        | 484        | 766        | 732        | 782        |     |     |     |     | <b>4330</b>    |
| <b>New Construction Inspections</b>   |            |            |            |            |            |            |            |            |     |     |     |     |                |
| Assembly                              | 3          | 19         | 4          | 11         | 14         | 9          | 4          | 5          |     |     |     |     | <b>69</b>      |
| Business                              | 8          | 13         | 8          | 5          | 8          | 7          | 7          | 15         |     |     |     |     | <b>71</b>      |
| Education                             | 0          | 0          | 0          | 1          | 1          | 0          | 0          | 2          |     |     |     |     | <b>4</b>       |
| Factory                               | 0          | 1          | 2          | 0          | 0          | 0          | 3          | 9          |     |     |     |     | <b>15</b>      |
| Institutional                         | 0          | 0          | 0          | 0          | 0          | 0          | 0          | 0          |     |     |     |     | <b>0</b>       |
| Mercantile                            | 6          | 13         | 10         | 8          | 19         | 15         | 15         | 14         |     |     |     |     | <b>100</b>     |
| Residential Single                    | 22         | 45         | 41         | 33         | 23         | 24         | 30         | 32         |     |     |     |     | <b>250</b>     |
| Residential Multi                     | 0          | 1          | 0          | 8          | 3          | 7          | 1          | 10         |     |     |     |     | <b>30</b>      |
| <b>Total New</b>                      | 39         | 92         | 65         | 66         | 68         | 62         | 60         | 87         |     |     |     |     | <b>539</b>     |
| <b>Existing Occupancy Inspections</b> |            |            |            |            |            |            |            |            |     |     |     |     |                |
| Assembly                              | 31         | 52         | 22         | 20         | 17         | 58         | 59         | 15         |     |     |     |     | <b>274</b>     |
| Business                              | 35         | 8          | 45         | 70         | 76         | 127        | 136        | 66         |     |     |     |     | <b>563</b>     |
| Education                             | 13         | 8          | 2          | 0          | 1          | 9          | 9          | 0          |     |     |     |     | <b>42</b>      |
| Factory                               | 0          | 0          | 0          | 3          | 0          | 0          | 0          | 0          |     |     |     |     | <b>3</b>       |
| Institutional                         | 1          | 0          | 0          | 1          | 1          | 0          | 1          | 1          |     |     |     |     | <b>5</b>       |
| Mercantile                            | 10         | 9          | 10         | 17         | 44         | 73         | 88         | 163        |     |     |     |     | <b>414</b>     |
| Residential Single                    | 7          | 0          | 0          | 0          | 2          | 0          | 1          | 2          |     |     |     |     | <b>12</b>      |
| Residential Multi                     | 2          | 11         | 37         | 10         | 2          | 1          | 1          | 0          |     |     |     |     | <b>64</b>      |
| <b>Total Existing</b>                 | 99         | 88         | 116        | 121        | 143        | 268        | 295        | 247        |     |     |     |     | <b>1377</b>    |
| <b>TOTAL INSPECTIONS</b>              | <b>138</b> | <b>180</b> | <b>181</b> | <b>187</b> | <b>211</b> | <b>330</b> | <b>355</b> | <b>334</b> |     |     |     |     | <b>1916</b>    |