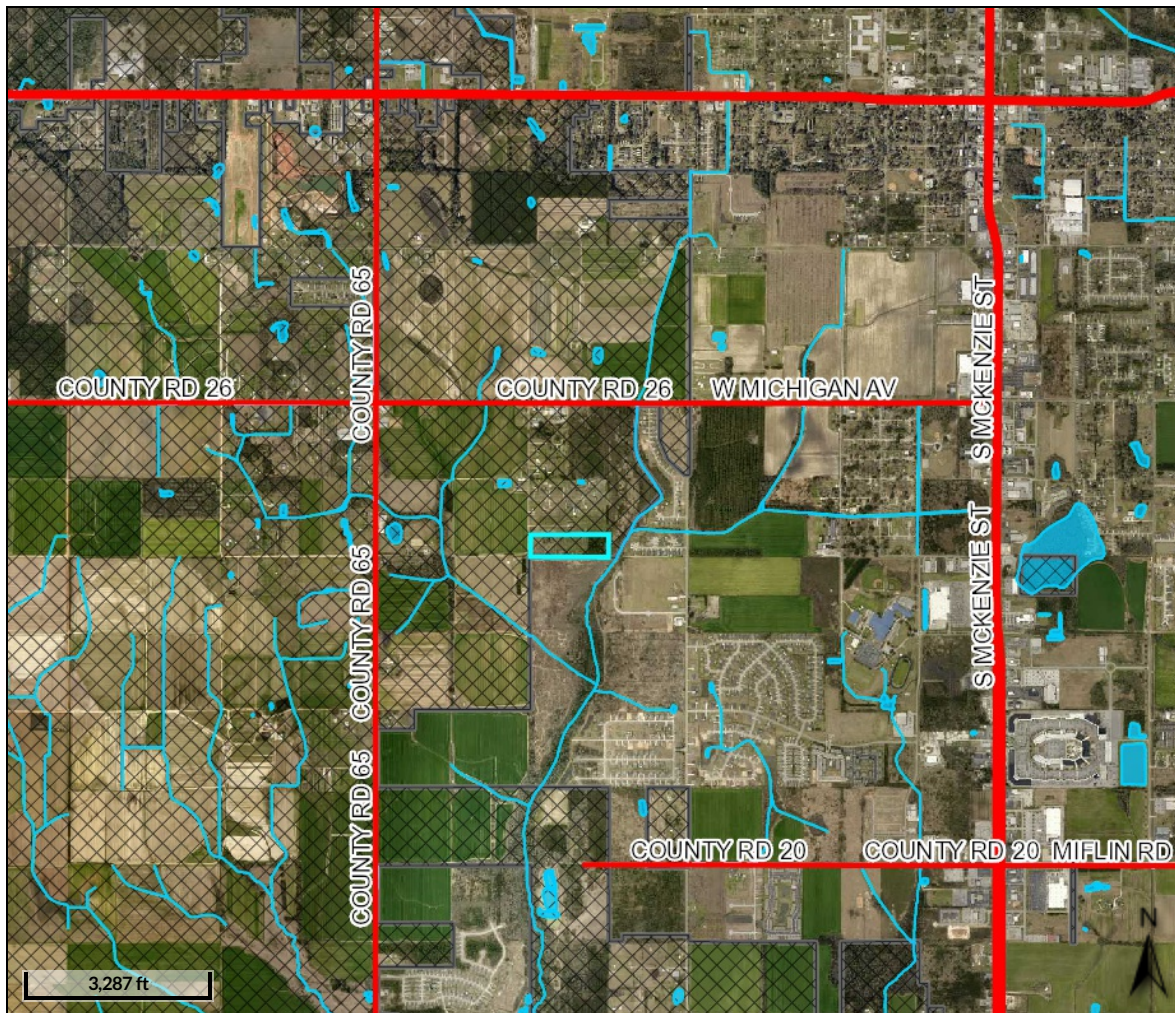


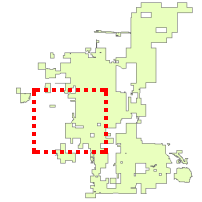
Annexation

Larry Engle Property PPIN# 31028

Created by: Katy Taylor



Overview



Legend

- Centerlines
- Foley City Limits
- County Mask
- Parcels
- Streams and Creel
- Lakes and Bays

PIN - 31028
Par Num - 007.000
Acreage - 11.756
Subdivision -
Lot -
Street Name - BARNER RD
Street Number - 11074
Improvement - RES

Name - ENGEL, LARRY E
Address1 - P O BOX 2132
Address2 -
Address3 -
City - FOLEY
State - AL
Zip - 36536

The information contained in the digital data distributed by the Baldwin County Commission is derived from a variety of public and private sources considered to be dependable, but the accuracy, completeness, currency, thereof are not guaranteed. The Baldwin County Commission makes no warranties, expressed or implied, as to the accuracy, completeness, currency, reliability, or suitability for any particular purpose of information or data contained in or generated from the county geographic database. Additionally, the Baldwin County Commission or any agent, servant, or employee thereof assume no liability associated with the use of the data and assume no responsibility to maintain it in any matter or form.

Date created: 12/9/2019
Last Data Uploaded: 12/9/2019 5:03:53 AM

Developed by  Schneider
GEOSPATIAL