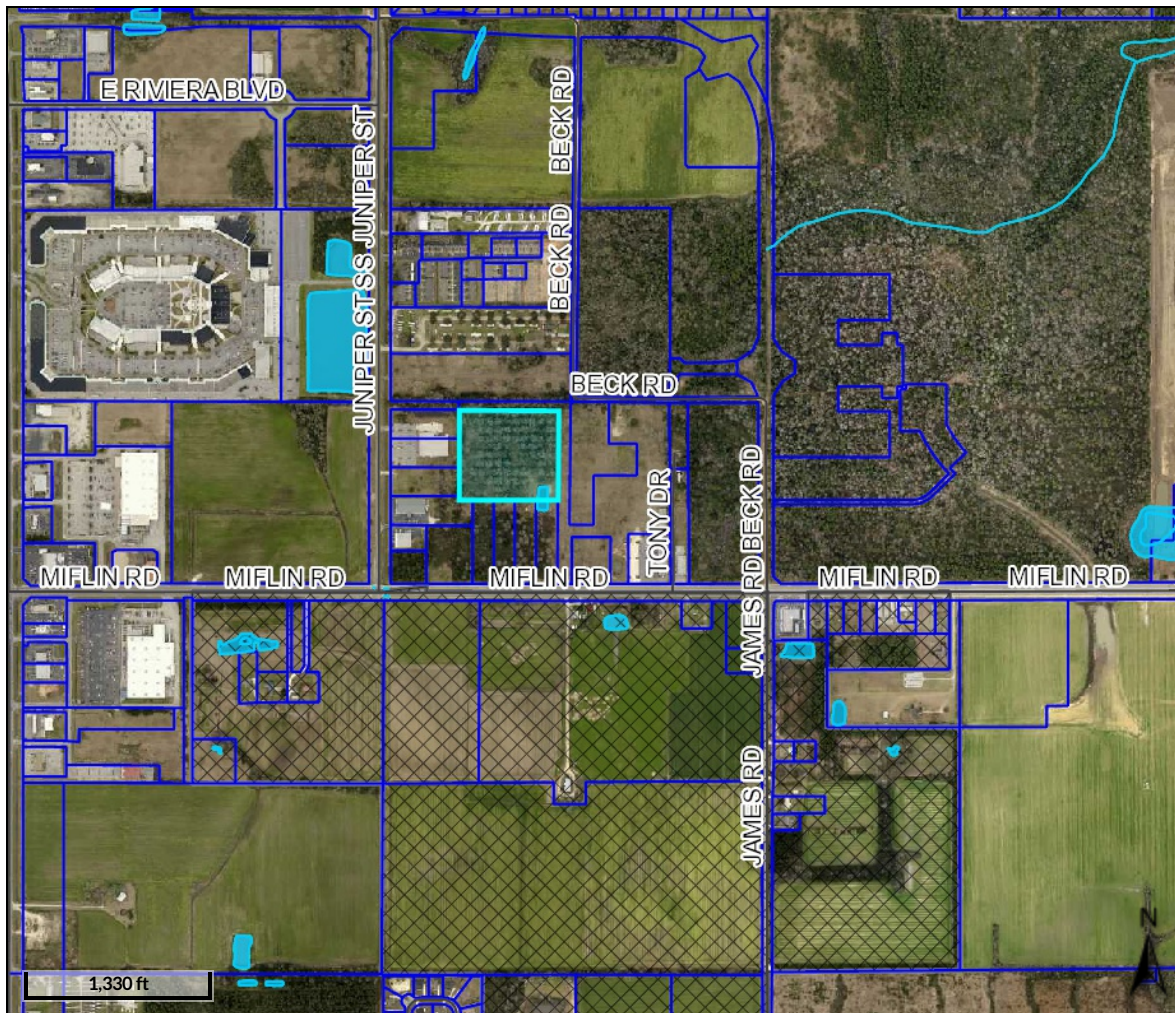
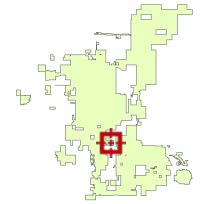


PFCD Property
Approximately 10 Acres

Created by: VSOUTHERN



Overview



Legend

- Main Highways
- County Roads
- Center lines
- Foley City Limits
- County Mask
- Foley City Limit Background
- Parcels
- Lot Lines
- Streams and Creel
- Lakes and Bays

PIN - 16409
Par Num - 012.000
Acreage - 9.895
Subdivision - WILPE
Lot - PAR 1
Street Name - MIFLIN RD
Street Number - 20801
Improvement - SHOP

Name - FOLEY, CITY OF PUBLIC FACILITIES COOPERA
Address1 - 407 E LAUREL AVE
Address2 -
Address3 -
City - FOLEY
State - AL
Zip - 36536

The information contained in the digital data distributed by the Baldwin County Commission is derived from a variety of public and private sources considered to be dependable, but the accuracy, completeness, currency, thereof are not guaranteed. The Baldwin County Commission makes no warranties, expressed or implied, as to the accuracy, completeness, currency, reliability, or suitability for any particular purpose of information or data contained in or generated from the county geographic database. Additionally, the Baldwin County Commission or any agent, servant, or employee thereof assume no liability associated with the use of the data and assume no responsibility to maintain it in any matter or form.

Date created: 5/10/2016