

**DIRECT-LINK BRIDGE SERIES CRISIS RESPONSE SYSTEM WITH THROW PHONE/SURVEILLANCE UNIT  
AND ELECTRONIC SCRIBE EVENT LOGGER**

Foley AL Police Dept.

RFQ # ETG - Foley AL - 120723

12/7/2023

Item #	Description	Price	QTY	TOTAL
ETG-DLB	Direct-Link Bridge Series Crisis Response System with Throw Phone/Surveillance Unit. <b>IMPORTANT</b> <i>NOTE: System includes ALL components/accessories listed below.</i>	\$20,460.99	1	\$20,460.99
-	Direct-Link Bridge Series Command Console with (6) Integrated Communication/Connectivity options; Throw Phone/Command Console Network, Bluetooth® Wireless, Auxiliary Audio, External Audio/Third Party Intermediary (TPI) Message Broadcast, Commercial PBX/Digital Landline Telephone System and Residential Analog Landline Telephone System with Internal Rechargeable Battery featuring Dead Battery Protection Built-Inside a Mil-Spec Pelican® 1500 Case with AC Power Adapter/Charger	-	1	-
-	Direct-Link Bridge Series Throw Phone/Surveillance Unit featuring; (5) Hidden Color Day/Night Pinhole Infrared (IR) Sensitive Cameras, Industrial Grade Telephone Handset with Rear Ear-Piece Mounted IR Tag, Hidden Omni-Directional Microphone Built Inside a Mil-Spec Pelican® 1300 Case with Clear "See-Through" Lid Attached to 100 ft. (30m) Cable Lead with First 25 ft. (7.6m) Encased in a Cut-Resistant Metal Sheathing and a Cord Transport/Storage Reel	-	1	-
-	Direct-Link Bridge Series Throw Phone Extension Cable Kit; includes: 1,000 ft. of Throw Phone Extension Cable Spool split into two 500-foot reels, featuring Mil-Spec Amphenol Connectors Delivered on a Heavy-Duty Metal Cable Transport/Storage Reel. <b>NOTE: Additional Direct-Link Bridge Series Throw Phone Extension Cable Spools may be procured/used to attain a Throw Phone deployment distance of up to 2,100 ft. (640m) +</b>	-	1	-
-	Practice Throw Phone (same weight and feel as the Throw Phone but does <b>NOT</b> include any internal circuitry/electrical components to allow for realistic Throw Phone deployment practice during training)	\$200.00	1	No charge
-	Rechargeable Battery Powered 7.0" LCD/TV with RCA/Composite Patch Cable and AC Power Adapter/Charger	-	1	-
-	Dual-Cup Negotiator Headset Kit; includes: Professional Grade, Aviator Style Dual-Cup Noise-Canceling Headset with Boom Microphone, Adjustable Listening Volume Control Dials and 8 ft. (2.4m) Push-to-Talk Cable	-	1	-
-	Single-Cup Negotiator Headset Kit; includes: Professional Grade Single-Cup Headset with Boom Microphone, Adjustable Listening Volume Control Dial and 8 ft. (2.4m) Push-to-Talk Cable	-	1	-
-	Multiport Audio Adapter -- connect up to 4 devices for monitoring/recording of audio	-	1	-
-	Dual-Cup Stereo Monitoring Headphone with 3.5mm (1/8") Plug and 3.5mm to 6.35mm (1/4") Adapter	-	3	-
-	Digital Voice Recorder Kit; includes: Digital Voice Recorder with 4GB of Integrated Flash Memory, PC USB Transfer Cable, Audio Patch Cables/Adapters and Batteries	-	1	-
-	Portable/Battery Powered Speaker Kit; includes: Portable/Battery Powered Speaker with Adjustable Listening Volume Control, Audio Patch Cables/Adapters and Batteries	-	1	-
-	Padded ETGI Nylon System Accessory Transport/Storage Tote Bag	-	1	-
-	Audio/Video Capture module. Capture/store audio and video data to your PC. Take digital still "snapshot" images of the video feed and send to members of your team.	\$124.95	1	No charge
ESEL	Electronic Scribe Event Logger (ESEL). Allows for real-time chronological event typescript and recording within a secure "umbrella". Text/picture based proprietary software.	\$3,000.00	1	\$3,000.00
-	Operations Manual for Direct Link Crisis Response system.	-	1	-

**Terms & Conditions:**

\*Shipping & Handling based on UPS Ground Shipping Charges to Agencies Located within the Continental U.S.

SALES TAXES AREN'T INCLUDED IN THIS QUOTE.

We Accept: Government Purchase Orders, Visa & Mastercard

Quote is valid for 60 days.

**NOTE:** ETGI is the "sole-source" manufacturer/distributor of the of Direct-Link Crisis Response Throw Phone Systems.

Subtotal: \$23,460.99  
Shipping & Handling: \$368.27  
**TOTAL: \$23,829.26**



TO WHOM IT MAY CONCERN:

Enforcement Technology Group, Inc. (ETGI) sells Direct-Link Crisis Response Throw Phone System's directly to law enforcement and military agencies. ETGI has no distributors for Direct-Link Crisis Response Throw Phone Systems. ETGI is the sole-source provider for Direct-Link Crisis Response Throw Phone Systems.

The Direct-Link Bridge Series Crisis Response Throw Phone Systems manufactured by ETGI meets and exceeds the following specifications:

*Direct-Link Bridge Series Crisis Response Throw Phone System Command Console:*

The Direct-Link Bridge Series System's Command Console contains an internal rechargeable battery with dead battery circuit protection that is constructed inside a Mil-Spec Pelican® case and features the following integrated communication/connectivity options:

- Throw Phone/Command Console Network
- Bluetooth® Wireless
- Auxiliary Audio
- External Audio/Third Party Intermediary (TPI) Message Broadcast
- Commercial PBX/Digital Landline Telephone System
- Residential Analog Landline Telephone System

*Direct-Link Bridge Series Crisis Response Throw Phone System Throw Phone Component:*

The Direct-Link Bridge Series System's Throw Phone component features an industrial grade telephone handset constructed inside a Mil-Spec Pelican® case and features/possesses the following qualities:

- Clear, "see-through" lid which allows for the identification of the contents of the Throw Phone component's case without it having to be opened by the subject.
- Throw Phone component's case is wired to 100 ft. of cable via mil-spec amphenol connector.
- The first 25 ft. feature of the cable that is wired to the Throw Phone component encased in a cut-resistant metal sheathing for added protected.

- Throw Phone component is able to be deployed up to a distance of 1,100 ft. away from the Command Console via the least (2) 500 ft. Throw Phone/Extension Cable Spool Reels provided standard with the System.
- The System is delivered with a "Practice Throw Phone" component to allow Tactical personnel to practice the deployment of the Throw Phone component during training exercises.

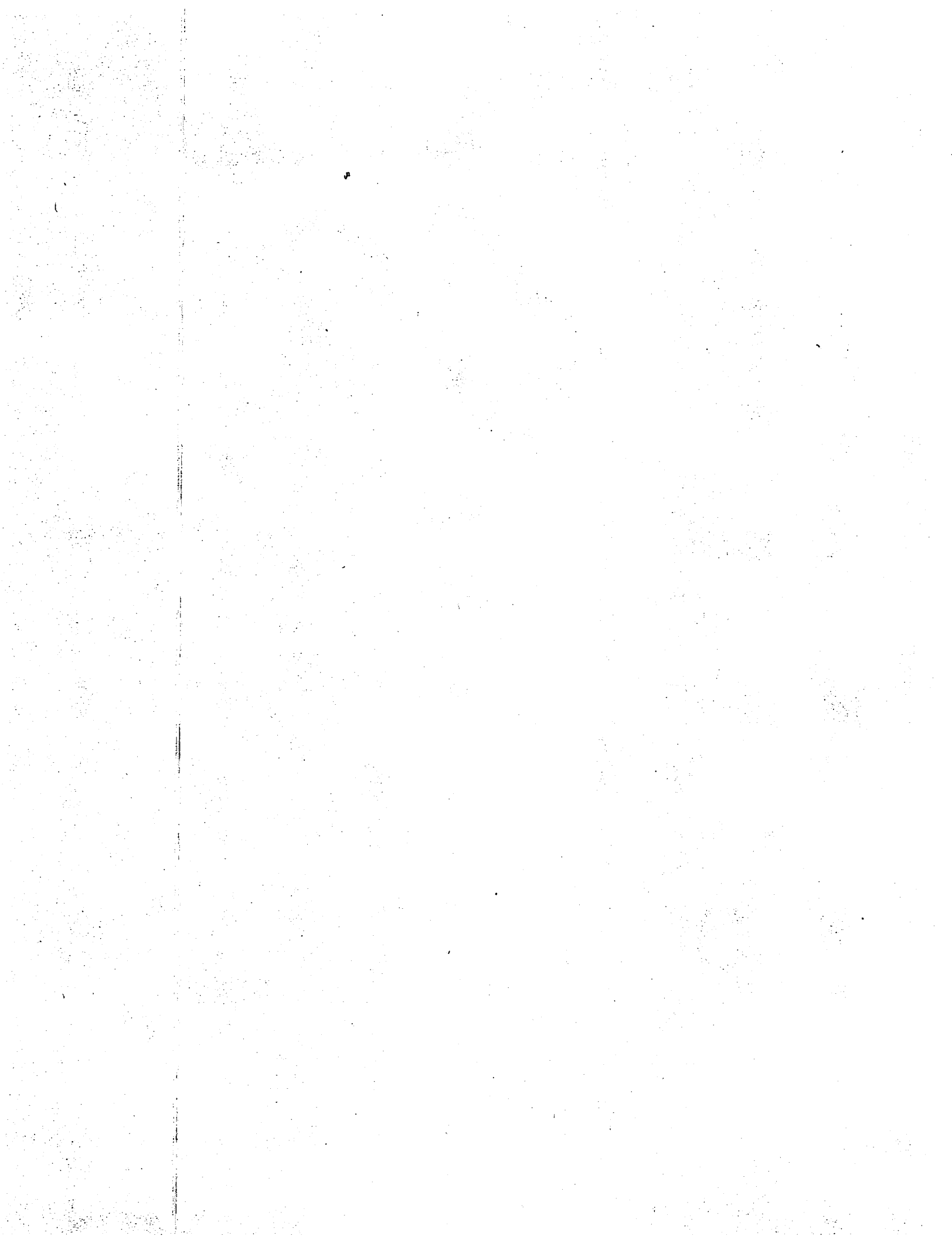
*Direct-Link Bridge Series Crisis Response Throw Phone System Additional Components/Accessories:*

The Direct-Link Bridge Series System is delivered with the following additional components/accessories necessary to facilitate System operations:

- *A Dual-Cup Negotiator Headset Kit*; to include: a professional grade, aviator style dual-cup noise-canceling headset with boom microphone, adjustable listening volume control dials and 8 ft. push-to-talk cable
- *A Single-Cup Negotiator Headset Kit*; to include: a professional grade single-cup headset with boom microphone, adjustable listening volume control dial and 8 ft. push-to-talk cable
- *A Multi-Extension Amplifier Box Kit*; to include: a multi-extension amplifier box, 50 ft. of audio patch cable with adapters and (2) 9v batteries to allow for connection of up to (4) external devices to monitor, distribute or record the System's audio data
- *(3) Dual-Cup Stereo Monitoring Headphones* with 3.5mm (1/8") plug and 3.5mm to 6.35mm (1/4") adapter
- *A Digital Voice Recorder Kit*; to include: a digital voice recorder with 4GB of integrated flash memory, PC USB transfer cable, audio patch cables/adapters and batteries
- *A Portable/Battery Powered Speaker Kit*; to include: a portable/battery powered speaker with adjustable listening volume control, audio patch cables/adapters and batteries
- *A Telephone Pickup Microphone*
- *A Padded Nylon System Accessory Transport/Storage Tote Bag*
- *A Transport/Storage Case Set*; to include: a large and a medium sized case with wheels to transport/store the Crisis Response Throw Phone System's Command Console, Throw Phone component, and other system components/accessories
- *A Detailed Operations Manual*

*Additional Direct-Link Bridge Series Crisis Response Throw Phone System Features & Factors:*

- The Direct-Link Bridge Series System is Crisis Response Throw Phone System is capable of distributing System data (i.e. communications between Negotiator and Subject) to up to (4) separate locations.
- For transport purposes, all Direct-Link Bridge Series System components/accessories delivered standard are able to fit into an empty trunk of a standard sized squad car.



- In the event that an agency is not satisfied with the Direct-Link Bridge Series System, ETGI agrees that the equipment may be returned within 30 days of delivery for a full money back refund.

If you have any questions, comments or need additional information/assistance please contact us directly at 800-873-2872.

Sincerely,

A handwritten signature in black ink, appearing to read "Aaron Dexter". The signature is fluid and cursive, with a large initial "A" and "D".

Aaron Dexter  
Marketing Manager